



Crow Ash Road

Berry Hill, Coleford, GL16 7RB

£435,000



A spacious & beautifully maintained detached bungalow, positioned on a generous plot with stunning mature gardens and extensive off road parking. Offering versatile and well-proportioned accommodation throughout, this wonderful home combines comfortable living space with peaceful surroundings, making it ideal for those seeking a tranquil lifestyle.

The accommodation is accessed through an entrance hallway leading to a spacious lounge featuring a charming fireplace & ample room for both relaxing and entertaining. Sliding doors open into the impressive conservatory enjoying delightful views across the beautifully landscaped rear gardens with direct access outdoors. The well appointed kitchen is fitted with a range of modern units providing generous worktop & storage space, while the separate dining room offers an ideal setting for family meals and entertaining guests. The property further benefits from two well-proportioned bedrooms, alongside a spacious family bathroom complete with both a bath & separate shower enclosure. In addition, to the side of the property there is a spacious utility room providing further storage and workspace, leading through to a convenient shower room.

Externally, the property truly excels, boasting expansive and beautifully maintained gardens with manicured lawns, colourful flower beds, ornamental shrubs and mature trees creating a wonderful sense of privacy and tranquillity. A large paved patio provides the perfect outdoor entertaining space, while the detached outbuilding & additional garden areas make this an excellent opportunity for gardening enthusiasts. To the front, a substantial block paved driveway offers parking for multiple vehicles, caravans or motorhomes, with gated access adding further convenience and security.

Berry Hill is a popular village on the edge of the beautiful Forest of Dean, offering a range of local amenities including shops, a primary school, public houses and fantastic woodland walks nearby.



Approached via UPVC double glazed front door into:

Entrance Porch:

8'7" x 2'11" (2.64m x 0.91m)

Door to entrance hallway, tiled flooring, UPVC double glazed windows.

Entrance Hallway:

20'6" x 4'2" (6.27m x 1.29m)

Doors to both bedrooms, lounge, dining room, bathroom & kitchen, storage cupboard, lighting, double panelled radiator.

Lounge:

14'10" x 10'11" (4.53m x 3.33m)

Feature woodburner with wooden mantel & tiled flooring, double panelled radiator, sliding doors to the conservatory, power & lighting.

Conservatory:

15'5" x 13'7" (4.72m x 4.16m)

UPVC double glazed windows, UPVC double glazed French doors, UPVC double glazed rear door, UPVC roof, double panelled radiator, power & lighting.

Dining Room/Additional Bedroom:

11'10" x 9'10" (3.62m x 3.02m)

UPVC double glazed window, double panelled radiator, power & lighting.

Bedroom One:

11'11" x 10'4" (3.65m x 3.16m)

Fitted mirrored wardrobes, UPVC double glazed window, double panelled radiator, power & lighting.

Bedroom Two:

11'10" x 10'10" (3.62m x 3.32m)

UPVC double glazed window, double panelled radiator, power & lighting.

Bathroom:

12'2" x 7'2" (3.72m x 2.20m)

Panelled bath, vanity storage unit with inset wash hand basin & W.C., wall units, shower cubicle, tiled flooring, tiled walls, heated towel rail, double panelled radiator, extractor fan, lighting, UPVC double glazed frosted window.

Kitchen:

16'11" x 8'8" (5.18m x 2.65m)

A range of wall units, base units & drawers, worktops, stainless steel one & a half sink with drainer unit, eye level double oven, gas hob, extractor hood, tiled splashbacks, door to rear porch, two UPVC double glazed windows.

Rear Porch:

3'9" x 3'0" (1.15m x 0.92m)

Lighting, doors to driveway & kitchen.

Tel: 01594 835751

Utility Room:
20'5" x 6'0" (6.24m x 1.84m)

Space & plumbing for washing machine & tumble dryer, Belfast style sink with mixer tap, power & lighting, UPVC double glazed window, UPVC double glazed frosted window & door to front, door to shower room.

Shower Room:
11'3" x 2'5" (3.44m x 0.75m)

Shower cubicle, wash hand basin, W.C., tiled walls, UPVC double glazed frosted window, double panelled radiator, lighting.

Outside:

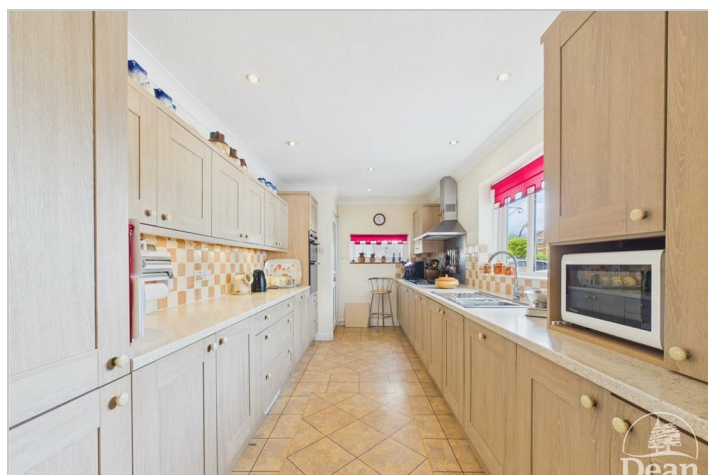
Externally, the property enjoys a generous and beautifully maintained plot, offering an exceptional amount of outdoor space ideal for both relaxing and entertaining. To the front, a substantial block-paved driveway provides ample off-road parking for multiple vehicles, caravans or motorhomes, with gated access adding privacy and security.

To the rear, the gardens are a particular feature of the property,

having been lovingly landscaped with expansive lawns, colourful and well-stocked flower beds, mature shrubs, ornamental trees and a variety of seating areas to enjoy the peaceful surroundings. A large paved patio provides the perfect space for outdoor dining and entertaining, whilst the attractive planting creates a wonderful sense of privacy throughout. In addition, there is a useful greenhouse, detached outbuilding/workshop and further garden storage areas, making this a fantastic outdoor space for keen gardeners or those seeking a tranquil setting.

Outbuilding:
14'8" x 7'8" (4.49m x 2.35m)

Windows, lighting.



Consumer Notes: Dean Estate Agents Ltd have prepared the information within this website/brochure with care and co-operation from the seller. It is intended to be indicative rather than definitive, without a guarantee of accuracy. Before you act upon any information provided, we request that you satisfy yourself about the completeness, accuracy, reliability, suitability or availability with respect to the website or the information, products, services, or related graphics contained on the website for any purpose.

These details do not constitute any part of any Offer, Contract or Tenancy Agreement.

Photographs used for advertising purposes may not necessarily be the most recent photographs, although every effort is made to update photographs at the earliest opportunity. Any reliance you place on such information is therefore strictly at your own risk. All photographic images are under the ownership of Dean Estate Agents Ltd and therefore Dean Estate Agents retain the copyright. You must obtain permission from the owner of the images to reproduce them.

Tenanted Property – we are not always able to show the most recent condition of a property due to tenants' privacy and we may choose to show the photographs of the property when it was last vacant to at least allow clients some idea of the internal condition. Therefore, we would of course, urge you to view before making any decisions to purchase or rent the property and before any costs.

Energy Performance Certificates are supplied to us via a third party and we do not accept responsibility for the content within such reports.

PRC Certificates – Some ex-local authority properties have been repaired in recent years using the PRC Scheme wherein a certificate has been produced by a qualified property engineer. This certificate does not imply the suitability for a mortgage approval and you must satisfy yourself of the work carried out that may meet your lenders criteria.

As with leasehold property or new build development sites, you are likely to be responsible for a contribution to management charges and/or ground rent or a contribution to the development service charge. Please enquire at the time of viewing.

You may also incur fees for items such as leasehold packs and, in addition, you will also need to check the remaining length of any lease before you complete a mortgage application form.

Please ask a member of our team for any help required before committing to purchase a property and incurring expense.

Road Map



Hybrid Map



Terrain Map



Floor Plan

Floor 0 Building 1

Approximate total area⁽¹⁾
1432 ft²
133 m²

(1) Excluding balconies and terraces

Calculations reference the RICS IPMS 3C standard. Measurements are approximate and not to scale. This floor plan is intended for illustration only.

GIRAFFE 360

Floor 0 Building 2

Viewing

Please contact our Coleford Office on 01594 835751 if you wish to arrange a viewing appointment for this property or require further information.

Energy Efficiency Graph



These particulars, whilst believed to be accurate are set out as a general outline only for guidance and do not constitute any part of an offer or contract. Intending purchasers should not rely on them as statements of representation of fact, but must satisfy themselves by inspection or otherwise as to their accuracy. No person in this firm's employment has the authority to make or give any representation or warranty in respect of the property.